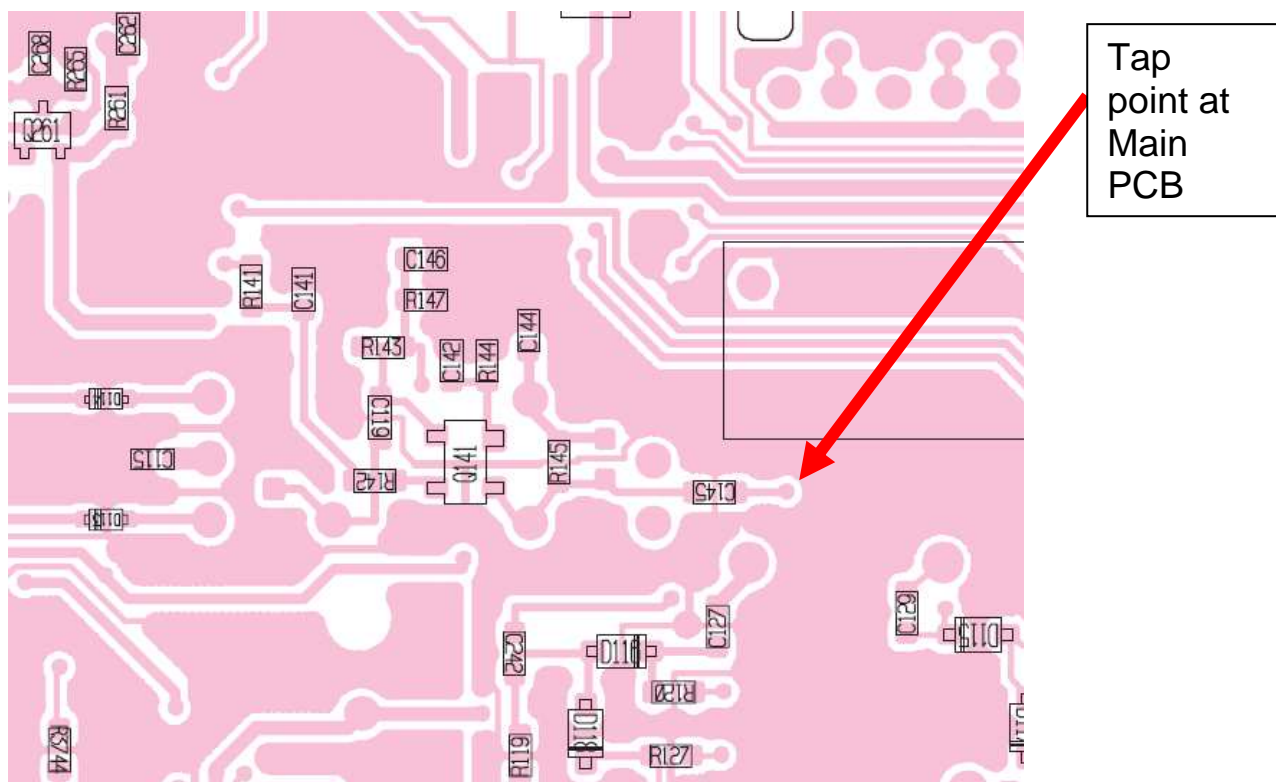


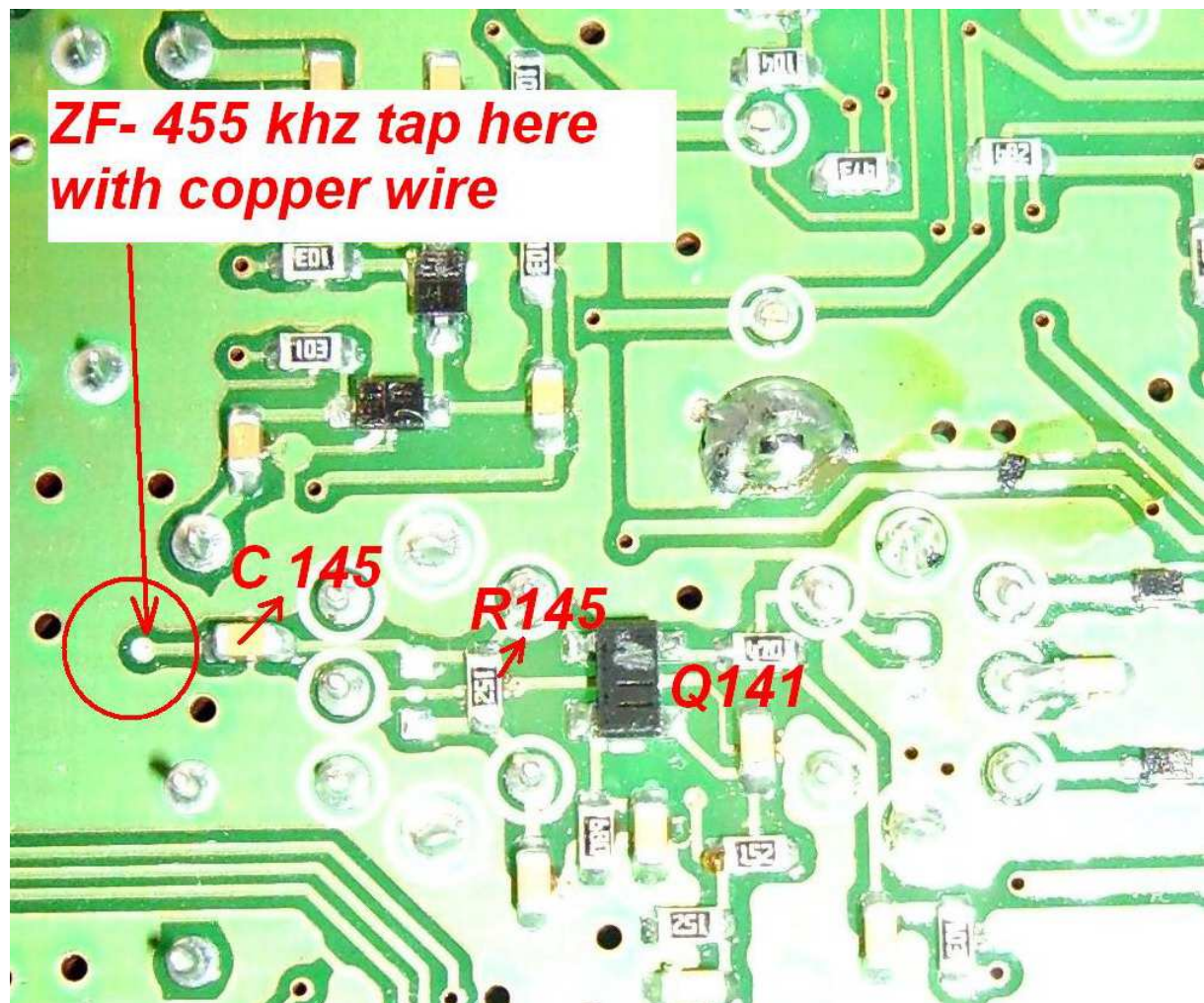
## Modification of the Icom 756 Pro III for DRM reception

In order to get the DRM 12 KHz signal readable for the soundcard of your PC we must install a down mixer from 455 KHz to 12 KHz. I have chosen the down mixer with xtal from ( <http://www.sat-schneider.de> ) and checked the layout of the Icom 756 Pro III. At the MAIN PCB of the TRX there is the point for the signal tapping. On page 81 and 107 of the service manual there is the C145/R145 junction where the 455 KHz signal can be tapped of (see picture 1). The location of the C145 is underneath the MAIN PCB; therefore we must remove first the bottom cover of the TRX, remove the DSP unit located on the MAIN PCB board of its seat. Remove all flat cables as well as the shielded cables from the PCB. Remove all screws and lift off the PCB with care. Lay PCB towards you and search for the location of the C145/R145 area as seen on picture 2. Than unsolder the small lug after C 145 location, select a small insulated copper wire and guide wire through the lug and resolder at lower side of the MAIN PCB (picture 3). Assemble the PCB back into its location. Find a good final position for the small PCB of the down mixer, I decided to solder two wires as a support onto the shielded square unit, see also picture 3. Connect all needed wires to the small PCB of the down mixer such as NF out, ZF in and +Ub and route cables as you like (see picture 4). I chose a shielded NF cable with a 3.5 mm Stereo plug (tip signal, ground) and guide the shielded NF cable under the connector of the tuner socket (4 pins). No extra hole must be drilled or similar. After installation check for a DRM reception/signal and check with your DRM Software (I use DREAM) for function, in need of ZF-in level adjustments, there is a pot (R1 on the down mixer). In my case I had no need of adjust the input signal.

Page 81 at service manual

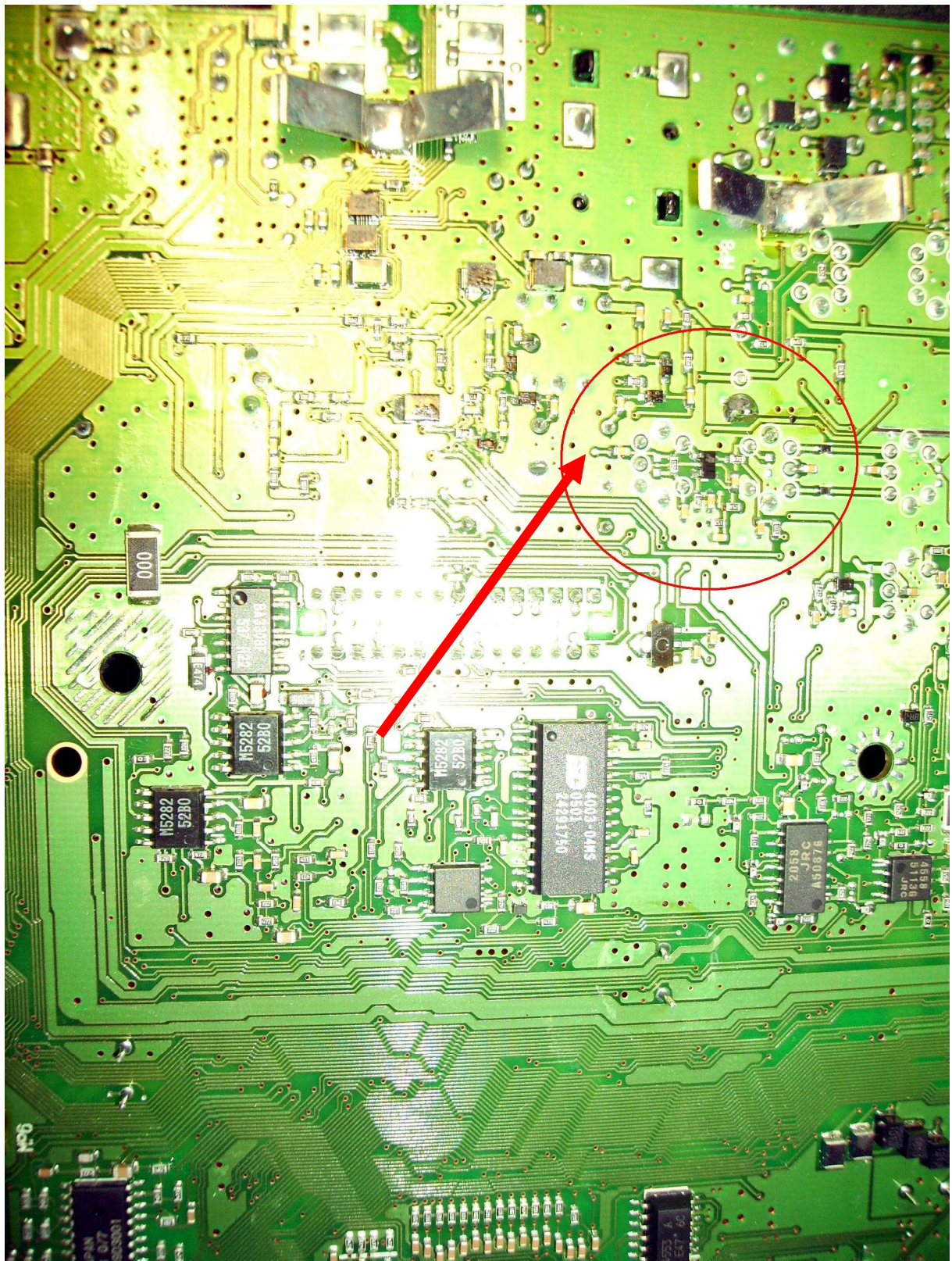


Picture 1



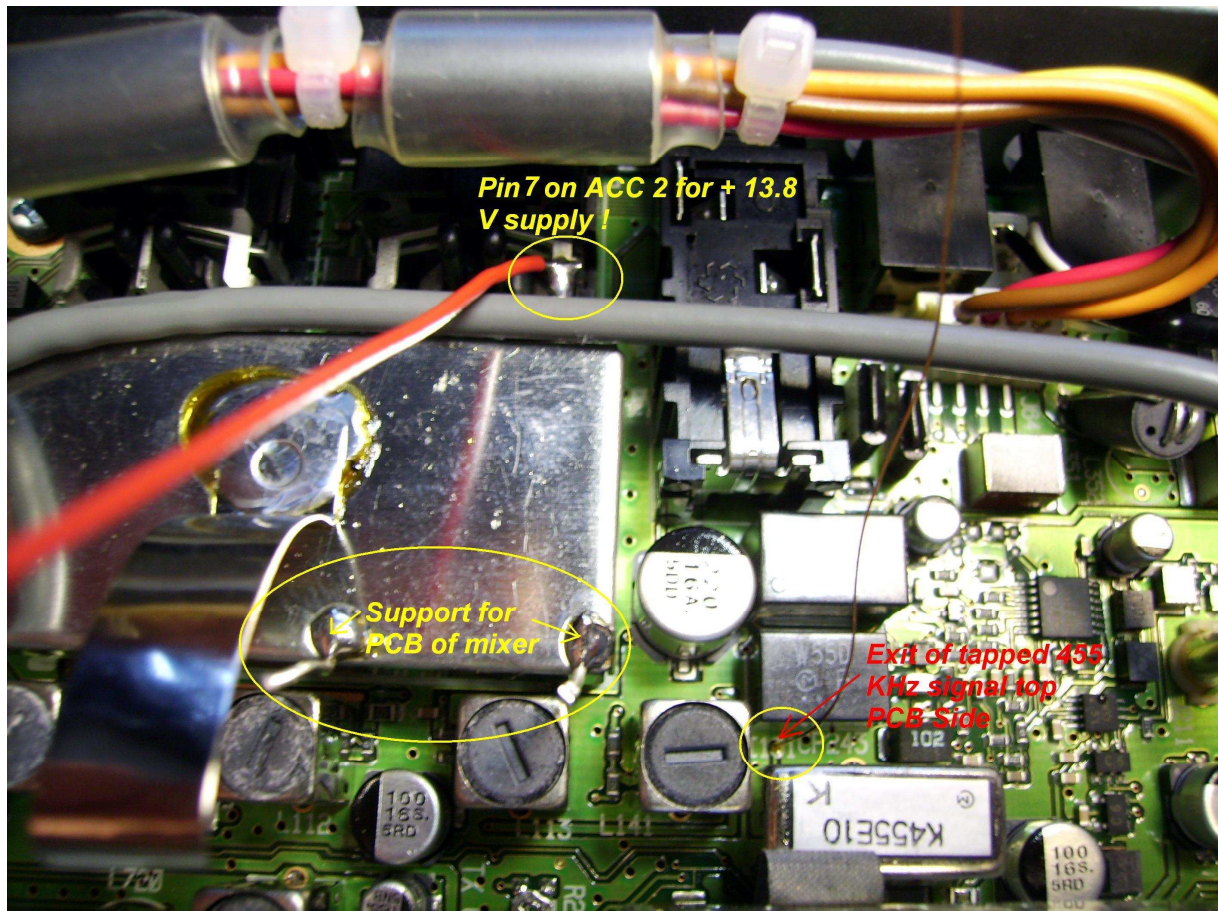


Picture 2

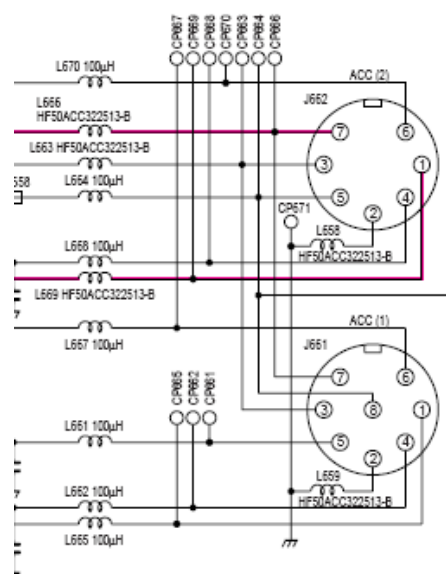




Picture 3

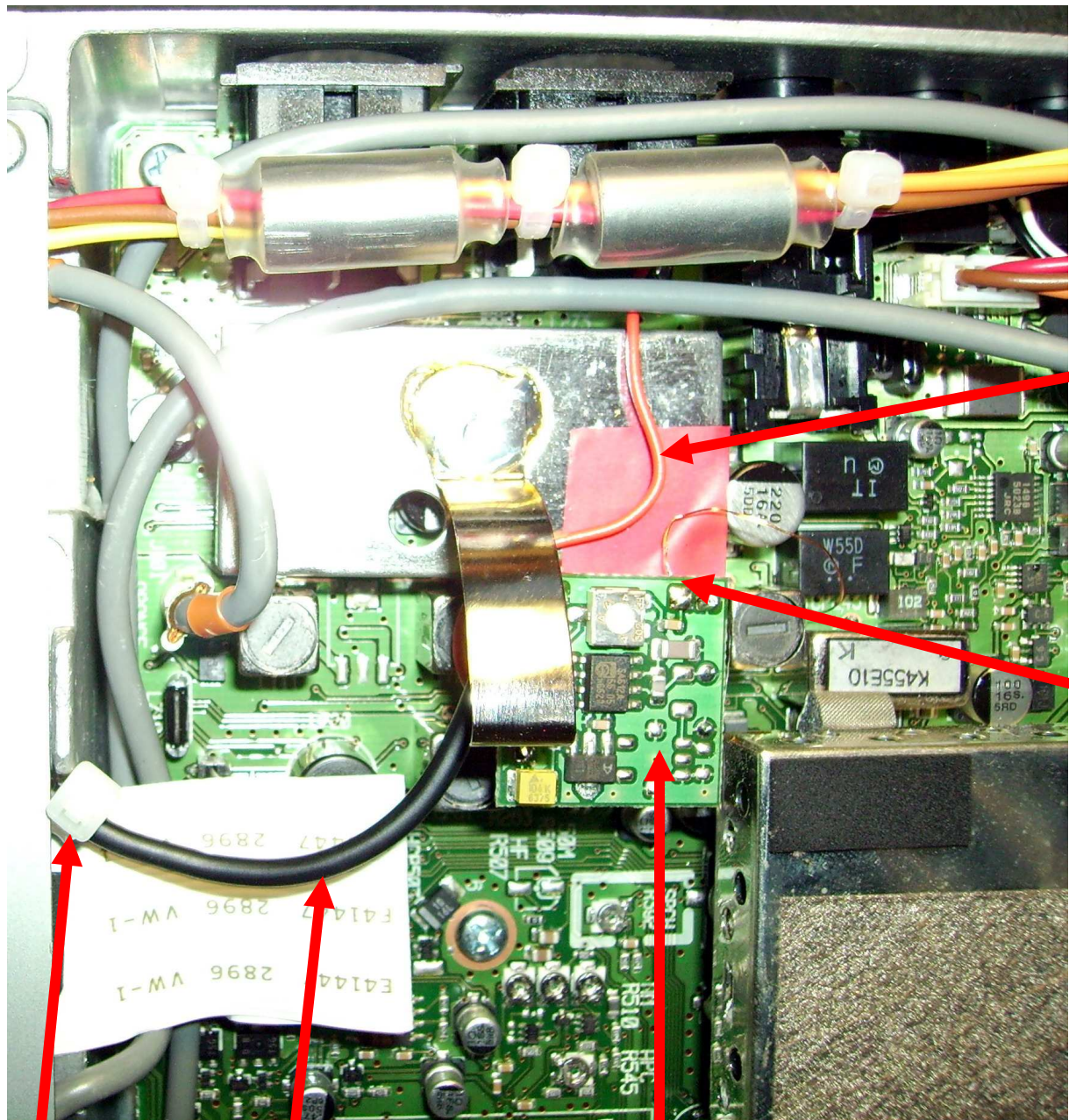


I choose the ACC 2 socket for the + Ub support, it is the upper right pin!





Picture 4



+ Ub  
tapped  
from  
ACC 2  
Pin 7

ZF  
Signal in

Cable  
Strap for  
pull relief

NF out 12  
KHz signal  
shielded  
cable

Down  
Mixer from  
Sat-  
Schneider

October 2007